



Leo's News

No 22
February 2026

Latest News and Information from Linslade Lower School

Half Term



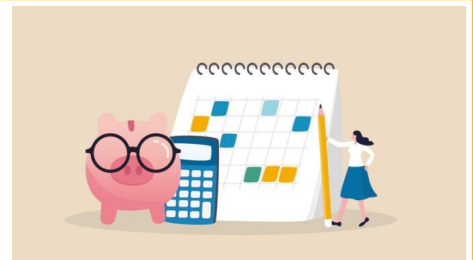
I hope you all have a happy and relaxed half term.



Please check your child's PE kit (including trainers) still fits, wash it and return it to school for when term starts on **Monday 23rd February**. Dates are on the website for upcoming activities– please check regularly. Spring is on the way!

Spotlight on **School budget - can you help?**

School budgets are shrinking and in common with other schools we are having to be very prudent with our expenditure. Unfortunately the future doesn't seem any brighter.

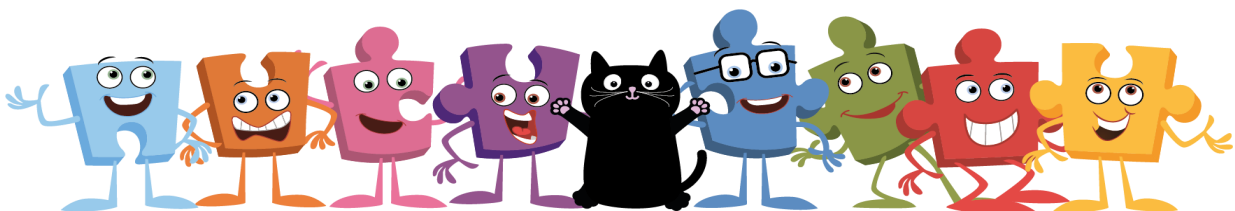


However, if you think you may be entitled to claim for free school meals we would urge you to do so even if your child is in reception, year 1 or year 2 and not paying for meals or if your child brings a packed lunch. This is because we receive funding for every named child on the free school meals list and the funding is used to pay for extra support that your child will receive.

For further information about eligibility and how to claim please go to the Central Bedfordshire Council Website and search for free school meals: www.centralbedfordshire.gov.uk

Helping children with friendships

As part of our relationship education we teach the children strategies to resolve conflicts with friends. Getting on and falling out is part of life. Building connections with others helps children develop their personality and empathy for others. In school we use a five step method to help children work together to negotiate disagreements. The strategy is with this newsletter and is displayed around school. By working through this with staff, children develop resilience when managing disappointment, learn to compromise and know what to do when others have hurt their feelings. This ability to see things from other points of view is essential to working together.



Glow in the Dark Multi-Skills

The children from Years 1 to 4 had a fun time on Wednesday with a sports workshop provided by the Leighton Linslade Sports Partnership and paid for by the PTA. They had fun in the hall playing a variety of games in the dark with glow in the dark resources!

A big thank you to the PTA for funding this.



School Nursing Health Clinics

03/03/26 at 14:30

We are pleased to announce that we are offering health clinics for parents/carers.

You can make an appointment via the school or if you prefer, just drop in for a chat.

These clinics will be staffed by your school nursing team at your child's school.

All are welcome to attend.

The School Nursing team help support your child's health throughout their school journey. Clinics will encourage the early interventions/ advice that you may need to ensure your child is able to reach their full potential.

We look forward to meeting you.



Please click the link to view an animation explaining our service and how to contact us
<https://vimeo.com/840387234/0a3c6c32db?fl=pl&fe=sh>

BLMK FBYM
The Friends of Bedfordshire Youth Music

Bedfordshire Music Trust

ORCHESTRAL JAMBOREE 2026

Do you play a string, brass, woodwind or percussion instrument at pre-grade or grade 1 standard? Then this fun day of music making is for you!

TO BOOK SCAN



Cost - £10

**Sunday 22nd
March 2026
10am - 4pm**
Concert for parents
4pm

**Vandyke Upper
School
Vandyke Rd,
Leighton Buzzard
LU7 3DY**

<https://www.bedfordshiremusictrust.org.uk/jamboree-application/>

BLMK.
Music Hub

Supported using public funding by



**ARTS COUNCIL
ENGLAND**

Safeguarding at Linslade Lower School

If you have any concerns about a child's safety or wellbeing, please speak to a member of the school's Safeguarding Team. Mrs Farlam and Mrs Hogg are happy to help. You can also contact the Central Beds Council Integrated Front Door on 0300 300 8585, who you can talk to about your concerns. They will give you advice or may investigate the circumstances. All child protection calls are treated in confidence and you don't need to give your details.

Everyone has a responsibility to protect children from harm.



Headteacher: Hazel Farlam BA (Hons) NPQEL

Tel 01525 372085

Email: office@linsladelower.beds.sch.uk

www.linsladelower.co.uk

